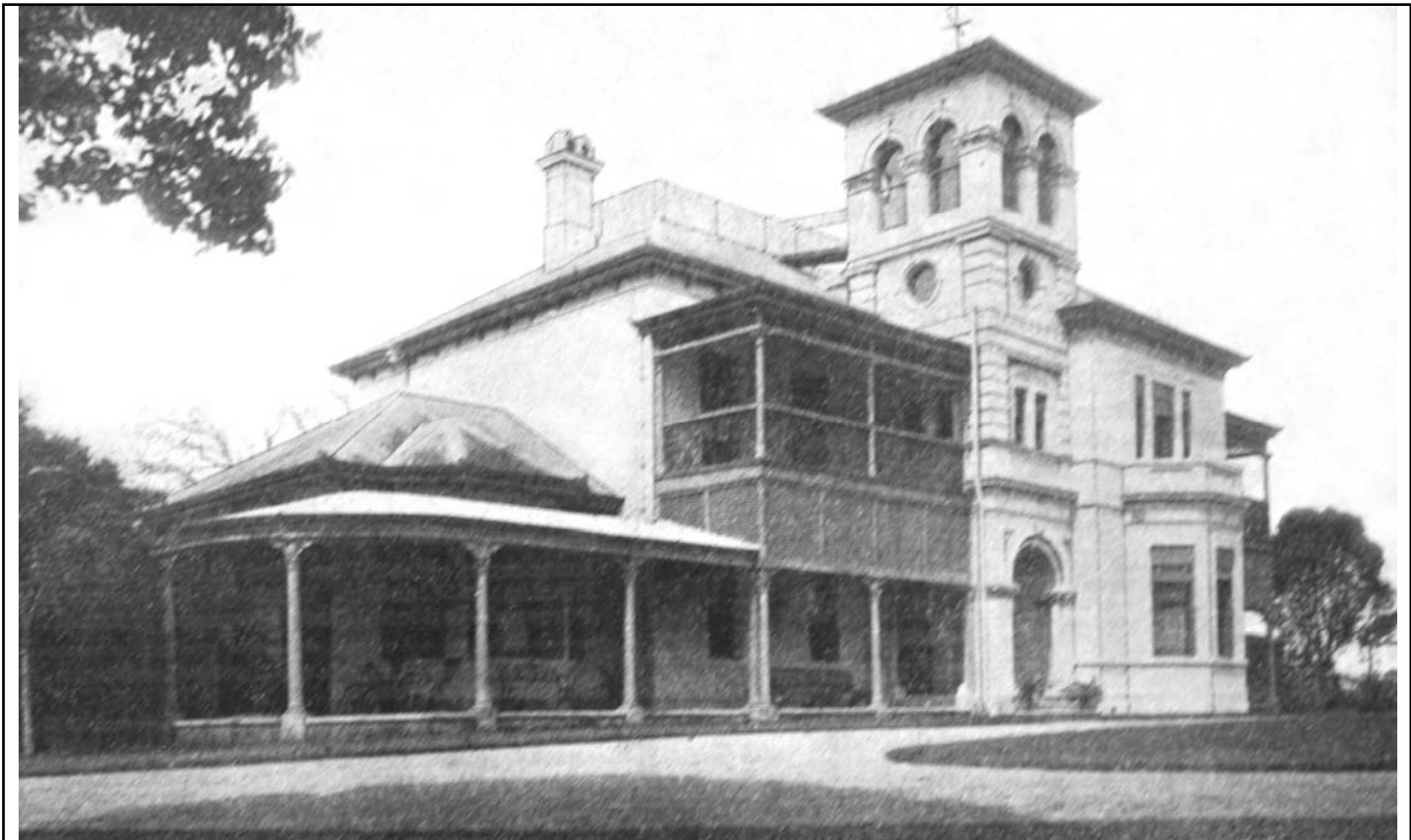




# Bulletin

ISSN No. 0035 8916  
Newsletter of the Royal Historical Society of Queensland, No.706 March 2007  
[www.queenslandhistory.org.au](http://www.queenslandhistory.org.au)  
[info@queenslandhistory.org.au](mailto:info@queenslandhistory.org.au)  
Ph: 07 3221 4198

**Patron: Her Excellency Ms Quentin Bryce AC, Governor of Queensland**  
**President: Jean Stewart**



'Kinellan', New Farm  
photo taken from *Trustees' Quarterly Review* July 1915  
(see Library report)

## President's Report March 2007

We are so busy that we now feel that 2007 is well and truly launched. Firstly the February *Bulletin* has appeared, a little later than usual because the mail-out included the Special Issue of the *Journal* - 'Tropical Transformations: Denis Murphy in Queensland History' and the first *Journal* of the new Volume 20, as well as the flyer calling for nominations for the John Douglas Kerr Award for Research and Writing of History. Nominations for the latter close on 30 March so we urge members and others to send in nominations for this prestigious award now in its third year.

The major concern for the Council since 14 February has been to draft a suitable response to the Multiplex Plan for the development of North Bank.

On that day I was interviewed by Channel 9 and by Brian Williams from the *Courier-Mail*. Allan Bell was also approached by Channel 7. We stressed the heritage value of our building and others in William Street and how the relationship with the river of such important buildings would be compromised by a range of high-rise buildings built beyond the freeway. After examining the model of the proposed development Council held an extra meeting to draft a response to be submitted before the closing date of 14 March set by the Government. We were very pleased that there was so much support in the newspapers particularly in articles and in letters to the editor. We hope that members of the Society took up the cause as well.

There has been much discussion also about the approaching Sesquicentenary in 2009 and we have

started to plan the series of conferences which will give the background to Separation and the events of 1859. Manfred Cross and I visited The Queensland Q150 Celebrations Unit and met the Director, Marion McMahon. In turn she gave a presentation to the Society's Council to explain the steps already taken to make the event something that can be celebrated by all Queenslanders.

Visitor numbers to the Store have begun to increase now that schools have begun to make bookings in response to our advertising program by fax. It was noted with interest by Guide Ken Jewell, that possibly the youngest visitor to attend a guided tour was an eight-day-old baby girl who was accompanied by her mother and her aunt from California recently.

The mammoth job of entering the photographic collection from the Post Office Museum onto our catalogue has been completed. There are 1163 photos altogether and Doug Lochhead and Judy Rechner are to be thanked for completing such a task. We also thank Mary Dickinson for preparing the existing museum catalogue for transfer to the InMagic Program which will make access to the catalogue much simpler. Rod McLeod continues collecting cuttings from fragile copies of the *Brisbane Courier for the 1880s and 1890s*. Beth Johnson has been working with the early Accession Registers, early *Bulletins* and Society Minutes to trace the provenance of items owned by the Society and still held at Newstead House. This will prove of benefit for both organisations.

It is not often that the Society accepts donations for our Museum collection because we have developed strict guidelines that allow us to collect items which fit into our existing collection by date or by association. It is therefore with much pleasure that we have accepted a very valuable item – a baby's cot made of cedar and hand carved by LJ Harvey. We already have ceramics created by LJ Harvey and members may remember the exhibition held on his work in 2002. This cot was donated by Marie Stark, née Muller. It was made for her as a baby in 1922 when, with her parents Mr and Mrs GG Muller, she lived at *Sandford*, Lower Bowen Terrace, New Farm. The cot is in perfect condition complete with drop side, tester, wire springs and coir mattress. We are very grateful to Mrs Stark for her gift.

The Society's outreach program has begun in earnest. I have spoken to meetings of the Toowong History Group, the Newmarket Probus Club and the Queensland Club. I attended the launch of the 130<sup>th</sup> Anniversary Celebrations of the Church of St Thomas the Apostle at Toowong when the presentation of the Church Recording by the Australian Design and Fine

Arts Society was made. Council member Carolyn Nolan, together with David Gibson of Newstead House, collaborated to present a paper at the Supreme Court on 23 February on houses of some Queensland judges and the Society was pleased to be able to contribute selected photographs for the presentation. I attended the opening of the Fanfair Exhibition and the re-opening of the partly restored Dining Room at *Miegunyah* for the Queensland Women's Historical Association. I also attended the launch of *Ridge to Ridge: Recollections from Woodridge to Park Ridge* by Mary Howells at the Logan West Library.

Preparations for future activities of the Society proceed with Manfred Cross planning an excursion to the Brisbane Valley area in May. Organisation of the first of the conferences planned by the Society to lead to the Q150 celebrations has begun. Discussions have been held with Ms Marion McMahon, the head of the Q150 Celebrations section of the Premier's Department.

There is much to be achieved and the Society welcomes suggestions, support and input from its members to make our projects successful ones. The year 2007 has certainly started with a flourish.

Jean Stewart  
President

## Research report

With a reduced staff owing to holidays and absence for work on commissioned histories, I have been very busy with some very interesting queries. These include requests for the names of the thirteen shearers imprisoned at St Helena after the 1891 Shearers' Strike; for information about the possible burial site on a 'Moreton Bay island' of a newly arrived two year old child on the *Nowshera* in September 1883; for the origin of the name of Miles Platting Road; for the names and sites of hotels in Brisbane; for the life of John Kent; for Simpson Bros, particularly Edward Percy Simpson; for Seventeen Mile Rocks; for Cleveland; for Mary Watson and Lizard Island. A member of the Society who is collecting references and source material is undertaking a most interesting project on McDowall and Elliott and the earliest experiments with television in Queensland. It was a pleasure to help Carolyn Nolan in her research for the lives and homes of six Supreme Court Judges – Lutwyche, Real, Cockle, Power, Griffith and Harding. From the RHSQ collection, photos and other illustrations were found on *Kedron Lodge*, *St John's Wood*, *Oakwal*, *Valda*, *Merthyr*, and *Eulalia*.

Jean Stewart  
Hon Researcher

## Country News

(Collected by Ruth Kerr from personal Queensland contacts, Affiliated Societies and Newspapers)

**Atherton** - The Shire Council and State Library of Queensland are assisting the local family history society to collect and arrange photos and reports on the effect of cyclone Larry in the district. (*Tablelands Advertiser* 17 January 2007 p.3)

**Cania Gorge** features in paintings by Thelma Ruthenberg displayed at Monto Historical and Cultural Complex. Historical features are captured. The area is now substantially covered by the dam (although much depleted). (*Central and North Burnett Times* 8 February 2007 p.10)

**Chatsworth** - The Chatsworth Public Hall Committee has been supported by Cooloola Shire Council in seeking relief from the burden of increasing public liability insurance for community groups. The Council agreed to write to the Federal government asking that measures be taken to compensate community groups. The Australian Competition and Consumer Commission has banned the Community Care insurance scheme as unfair collusion to defeat market forces in the insurance industry. The scheme will cease to exist in the next 14 months. (*Gympie Times* 20 October 2006 p.3 including photo of the hall)

**Cooloola Shire Libraries** have received a Strategic Development Grant from the State Library of Queensland to undertake the *Cooloola - Then and Now* project. It is an on-line interactive project involving selecting historical images and having a photograph taken from the same angle and position today. It will be web based. The libraries are collecting photos from the community. (*Gympie Times* 20 January 2007 p.14 including three photos)

**Dalby** - The significant buildings in the town were featured in the local newspaper on 30 January - St John's Anglican Church built in 1866, old Police Station built in the mid 1860s, old Dalby Town Council Chambers built in 1932, Imperial Hotel built out of Bunya Mountains red cedar in 1880, and the old bath house on the banks of Myall Creek below the Arts Centre. The newspaper also advertised the Pioneer Museum open every day except Christmas Day. (*Dalby Herald* 30 January 2007 p.9 including photo)

**Irvinebank State Treatment Works** - A photograph of the building appeared in the *Cairns Post* on 22 November 2006 associated with an article promoting the mining industry in the region, which is being revitalised by the mining boom and the success of Indigenous Land Use Agreements. The article also referred to investments by Kagara Zinc Ltd at Mount Garnet and Chillagoe - Mungana. (*Cairns Post* 22 November 2006 p.8)

**Kin Kin** - "The Edge Noosa" community development by Titanium Noosa Pty Ltd of 522 ha between Wahpunga Range and Kin Kin Creek has been referred under the *Environment Protection and*

*Biodiversity Act 1999* (Cth) for consideration of cultural heritage and biodiversity values. All of the area was originally logged for the Elanda Point sawmill on Lake Cootharaba in the 1870s and 1880s. Most of the proposed development will occur on Lot 4 on SP149484, original portion 1125 selected by Abraham Luya, one of the proprietors of the sawmill. It was purchased in the late 1920s by Dr Earle Page, federal leader of the Country Party and Prime Minister from 7<sup>th</sup> to 26<sup>th</sup> April 1939. Page's Road was constructed in 1930.

## CALENDAR

### March 2007

**Wednesday 14 March** 12.30 pm 'The 1893 Floods' by Marilyn England

**Thursday 15 March** 6.00 pm 'Arthur Exley' by Yvonne Evans

**Friday 16 March** **Bulletin deadline**

### April 2007

**Wednesday 11 April** 12.30 pm 'Fiji in the time of Governor Gordon' by Loretta de Plevitz

**Thursday 19 April** 6.00 pm 'Ian Fairweather – Bribie Island Years' by Jim Lergessner

**Friday 16 April** **Bulletin deadline**

**Maleny** - Photo of Maleny Hotel in 1920s was published in the local newspaper and extra details were sought by the Landsborough Historical Society to identify it. In the 1920s and 1930s the publicans were: L Halley 1924, WR Burnett 1924-1934, WHR Burnett 1935-1941; RC Burnett took over in 1942. (*Range News* 18 January 2007 p.17)

**Mareeba** - Society member, Mr Glenville Pike F.R.Hist.S.Q, OAM, has been awarded an RADF grant of \$2,500 by Mareeba Shire Council towards the publication of his autobiography. It is expected to be published through Central Queensland University. (*Tablelands Advertiser* 14 February 2007 p.8)

**Mundubbera** - Edward and Nola Briggs formerly of *Munbooree* presented to the Mundubbera Historical Society a Briggs family bible, a book of the alphabet and stories from 1660 to 1702. Edward Briggs' father, Richard, was chairman of Auburn Shire Council for a period. (*Central and North Burnett Times* 8 February 2007 p.4)

**Pomona** - A \$180,000 grant under the Federal government's Regional Partnerships Program has been allocated for the redevelopment of the Majestic Theatre in Pomona. The purposes of the grant are the restumping of the building, removal of asbestos, replacing the roof, restoring the crows ash sprung dance floor and a new restaurant and cafe. (*Cooroy Rag* 31 January 2007 p.21 including photo)

## Suburban Heritage

**Auchenflower** - McIlwraith Croquet Club was established in 1923 on land donated by Lady Harriett McIlwraith second wife and widow of Sir Thomas McIlwraith, three times premier of Queensland. The building was submerged in the 1974 flood. In 2001 the club was declared of local significance under the heritage register planning scheme policy of the Brisbane City Plan. Last year the club recorded more than 3,000 players and 70 groups and more than 2,000 visitors to the club. (*Westside News* 31 January 2007 p.6 including photo)

## Program report

My mother always told me that there are two topics of conversation to be avoided in polite society, politics and religion. The February lectures covered each of these topics; the Wednesday one on the politics of the great Labor Party split of 1957 and the Thursday evening lecture was about a religion-owned and operated historic building.

Manfred Cross' paper attracted the largest audience ever for a Wednesday lunchtime lecture, and John Mackenzie-Smith's paper on historic GFS House in New Farm drew the biggest audience for the first evening lecture of any year.

So, does this indicate that in today's society 'times they are a changin', or is it that RHSQ is not polite society? Whatever the explanation, it has been a wonderful start to our lecture program for 2007.

The March lectures are no less interesting. On Wednesday 14 March Marilyn England will present a PowerPoint-illustrated lecture on the 1893 Brisbane floods, while on the following evening, Thursday 15 March, Yvonne Evans will deliver her fine paper on Arthur Exley, a pioneering teacher and champion of teachers' superannuation.

There are two special items in our program calendar that need emphasising. The first is the third annual Presentation Dinner for the John Kerr Medal for excellence in historiography. As usual, the dinner is held on Queensland Day on Wednesday 6 June.

The second event is the Society's annual Saturday seminar to be held on 11 August. This year the theme is pre-separation Queensland in the 1840s and 1850s.

I urge you if not to pen these events into your diary then to use a bold black pencil.

Ian Hadwen

## Our Heritage @ Risk Program

Museums Australia and Australian Council of National Trusts has established a Register of Heritage @ Risk in Australia ([www.heritageatrisk.org.au](http://www.heritageatrisk.org.au)). Societies are invited to consider any heritage site at risk in their

area, particularly ones not on National, separate from the Register of the National Estate, or State Registers, and advise the National Trust of Queensland to consider it for the new register. The National Trust of Queensland contact is Val Dennis at [listings@nationaltrustqld.org.au](mailto:listings@nationaltrustqld.org.au).

## Library report

Over the past month we have catalogues a number of items including Peter Brown's *A bridge to St Lucia* and *Norman Baird: A spark within* by Kathleen Denigan. Janice Pittam donated the report *Cannon Hill saleyards: Historical study*.

Many thanks to Doug Lochhead for organising the Australia Post photos, giving them location numbers, inserting them into archival sleeves, and typing up the catalogue descriptions. A total of 1,244 photographs has been added to the collection. These photos are not only of post offices, telephone exchanges or telegraph poles, they also include photos of places and people and will be of great use to future researchers. Doug has also taken 29 photos, mainly photos of Brisbane homes, from the 1908-09 *Trustees' Quarterly Review*. This is part of a project covering the *Trustees' Quarterly Review* from 1908 to 1940.

Marjorie Shackleton has donated three volumes: *Some early Queensland educators and their schools*; *More early Queensland educators and their schools*; *Mid twentieth century Queensland educators*. Jean Stewart donated *Lilies in the field: first ladies of Queensland 1824-1914* and *Memories of Taringa Village*. Carolyn Nolan and Ruth Kerr have generously donated numerous newspaper cuttings. Over the years Ruth has contributed many cuttings and as a result the Welsby Library has much useful information on Gympie, Cooloola and other areas.

Ian Hadwen and Manfred Cross continue to weed their private collections to the gain of the Society and the Welsby Library. Ian has donated *Explorers of Australia, Black Australia; Born a half-cast; Thomas Mitchell: Surveyor General and explorer; Kings in grass castles; Conned!; Where ya' been, Mate?; Unbranded; Cattle camp; The sunlit land*.

Donations from Manfred Cross include *A brief history of the Brisbane Port Division of the Royal Australian Naval Reserve and the Queensland Division of the Naval Reserve Cadets; Jetty memories: Stories of the Redcliffe jetty; Sri Lankan migrants in Queensland in the nineteenth century; Prelude to power: The rise of the Labour Party in Queensland 1885-1915; A treasury of memories: The life and times of HJ Windsor and his family; Sellout: The story of the SEQEB strike; Australia awakening; Kyogle – Brisbane golden jubilee 1930-1980; Industrial siege: The Mount Isa dispute; The forgotten people: A history of the Australian South*

*Sea Island community; The Australian Labor Party and its leaders; Atlas of population and housing, 1967 census: Brisbane and Gold Coast; Brisbane ... a social atlas: Atlas of population and housing, 1981 census, volume 4; Brisbane ... a social atlas: Census of population and housing, 30 June 1986; Performing arts complex: Queensland Cultural Centre: A State Government project; Aboriginal settlements: A survey of institutional communities in eastern Australia; The shearers' war: The story of the 1891 shearers' strike; and Memoirs of the Queensland Museum Cultural Heritage series: Queensland 1901.*

A very interesting booklet, *The collected writings concerning Henry Plantagenet Somerset: Member of the Queensland Parliamentary seat of Stanley (1904-1920)* is a welcome addition to our collection.

Judy Rechner  
Hon Librarian

## New books

**Surveying Queensland 1839-1945** by Bill Kitson and Judith McKay.

With two expert authors, prolific illustrations, and a text that covers all areas of the state and every aspect of development, this book is essential reading for every Queensland historian. It is available from all offices of the Department of Natural Resources and Mines, State Library of Queensland, Queensland Museum and regional campuses, and Queensland Art Gallery for \$32.95 plus \$8.00 postage where applicable.

## Queensland State Archives

The State Archives, 435 Compton Road Runcorn, are open Monday to Friday from 9.00 am to 4.30 pm and on the second Saturday of each month from 9.00 am to 4.30 pm.

## National Archives of Australia

The opening hours for The National Archives of Australia at 16 Corporate Drive, Cannon Hill are now every Wednesday to Friday from 9.00 am to 4.30 pm and on the third Saturday of each month from 9.00 am to 1.00 pm. Records must be pre-ordered. Ph 3249 4226

## Events and functions of interest

**National Archives of Australia** – Free Seminars held at 16 Corporate Drive, Cannon Hill from 9.00 am to 10.00 am

*The White Australia Policy* – Saturday 17 and Wednesday 21 March

*Planes, Trains and Automobiles: Transport Records in Archives* – Wednesday 18 and Saturday 21 April

**Queensland State Archives** – Seminars are held in Lecture Room 1 at 435 Compton Road, Runcorn from 10.00 am to 11.00 am. Bookings on 3131 7777. *Harmony Day Seminar*, Wednesday 21 March, celebrating multiculturalism in Queensland. *Starting Research at QSA*, Wednesday 24 April - finding out about the services and resources available to new researchers.

**Queensland Museum** – Level 2, *Icons of Australia*; Level 3, *Museum Zoo*; Level 4, *Dandiri Maiwar and Burarra Gathering*. Daily 9.30 am to 5.00 pm.

*The New recorders: Queensland's cinematic heritage*, by Kev Franzi on Wednesday 5 April from 12.30 pm

*History in Motion: 100 years of the Peel Island Lazaret* presented by The Friends of Peel Island and Dr Jon Pragnell, and Doris and Ruth Gabriel on Wednesday 2 May from 12.30 pm.

### State Library of Queensland

*A Few of our Favourite Things* – Level 4, until 11 March. Ten prominent Queenslanders have selected their favourite items from the Heritage Collections.

*Unbound – artists' books* – Level 4, until 28 March.

**Gallery of Modern Art** is hosting the 5<sup>th</sup> Asia-Pacific Triennial of Contemporary Art until 27 May.

**City Botanic Gardens** – Queensland's oldest heritage park was established in 1855 on the site of the Government Garden which supplied food crops for the Moreton Bay penal settlement. See ancient trees, mangrove boardwalk and 1905 Curator's Cottage (now the Café).

### Sunshine Express rail tours –

Steam train tour to Palmwoods with an option to cruise Pumicestone Passage or Buderim on 31 March, *Steam Safari to Quilpie* (9 days) April 16-23. Information and bookings phone 3252 1759.

## BUS TRIP IT'S ON AGAIN

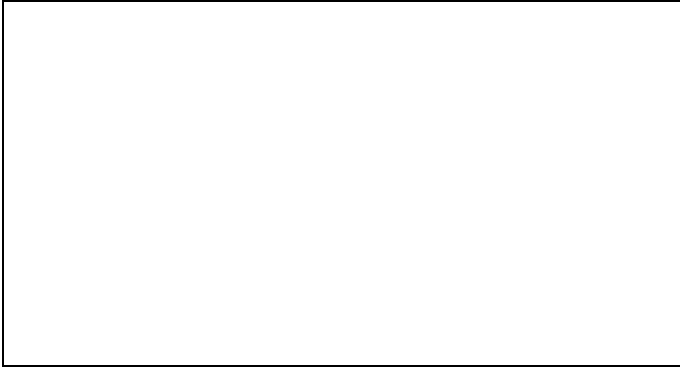
This year's bus trip will be on the weekend of 19 and 20 May. It will visit historic properties and sites on the Stanley and Upper Brisbane rivers explored by Cunningham in 1829 and by Logan in 1830; this area was first settled in 1841.

The overnight stay will be in Nanango with dinner at the Nanango RSL Club. It is expected that costs will be similar to previous trips. Details and a booking form will be included in the April Bulletin.

Royal Historical Society of Qld  
 PO Box 12057  
 Brisbane George Street  
 Qld 4003  
 RHSQ Journal: PP424022/00020  
 RHSQ Bulletin: PP424022/00019

**SURFACE  
 MAIL**

POSTAGE  
 PAID  
 AUSTRALIA



| <b>Important Functions and Events</b> |  |
|---------------------------------------|--|
| <b>CALENDAR</b>                       |  |
| <b>March 2007</b>                     |  |
| <b>Wednesday 14 March</b>             | 12.30 pm <b>'The 1893 Floods'</b> by Marilyn England                           |
| <b>Thursday 15 March</b>              | 6.00 pm <b>'Arthur Exley'</b> by Yvonne Evans                                  |
| <b>Friday 16 March</b>                | <b>Bulletin deadline</b>   |
| <b>April 2007</b>                     |  |
| <b>Wednesday 11 April</b>             | 12.30 pm <b>'Fiji in the time of Governor Gordon'</b><br>by Loretta de Plevitz |
| <b>Thursday 19 April</b>              | 6.00 pm <b>'Ian Fairweather – Bribie Island<br/>Years'</b> by Jim Lergessner   |
| <b>Friday 16 April</b>                | <b>Bulletin deadline</b>   |

**RHSQ Infobox**

The Society is represented on the National Trust of Queensland and the Board of Trustees of Newstead House  
 The Society acknowledges the financial assistance of the Queensland State Government, and rate remission from the Brisbane City Council

**Contact details:**

|                  |  |
|------------------|--|
| <b>Location:</b> | Historical Museum and Welsby Library at the Commissariat Store, 115 William Street, Brisbane           |
| <b>Phone:</b>    | 07 3221 4198   |
| <b>Fax:</b>      | 07 3221 4698   |
| <b>E-mail:</b>   | info@queenslandhistory.org.au  |
| <b>Website:</b>  | www.queenslandhistory.org.au   |
| <b>ABN:</b>      | 34 217 251 028   |
| <b>Postal:</b>   | The Royal Historical Society of Queensland, PO Box 12057, Brisbane George Street, 4003                 |
| <b>Open:</b>     | Tuesday to Friday and most Sundays 10.00 am - 4.00 pm, Closed on Christmas Day, Boxing Day and Easter. |

**Bulletin articles only:**

|                |  |
|----------------|--|
| <b>Editor</b>  | Allan Bell   |
| <b>E-mail:</b> | info@queenslandhistory.org.au                          |
| <b>Phone:</b>  | 07 3221 4198   |
| <b>Fax:</b>    | 07 3221 4698.  |
| <b>Postal:</b> | RHSQ,<br>PO Box 12057,<br>Brisbane George Street, 4003 |

**Subscriptions (with GST):**

|   |            |
|---|------------|
| <b>Ordinary Member</b>                                | \$45.00    |
| <b>Partner of Member</b>                              | \$15.00    |
| <b>Junior Member (18)</b>                             | \$10.00    |
| <b>Full-time Student (25)</b>                         | \$25.00    |
| <b>Affiliated Society</b>                             | \$40.00    |
| <b>Libraries Subscription</b>                         | \$50.00    |
| <b>Corporate/Institutions</b>                         | \$75.00    |
| <b>Life membership –<br/>purchased after 15 years</b> | \$1,000.00 |