



THE RHSQ

Bulletin

74 years of continuous publication

APRIL 2016 No. 806

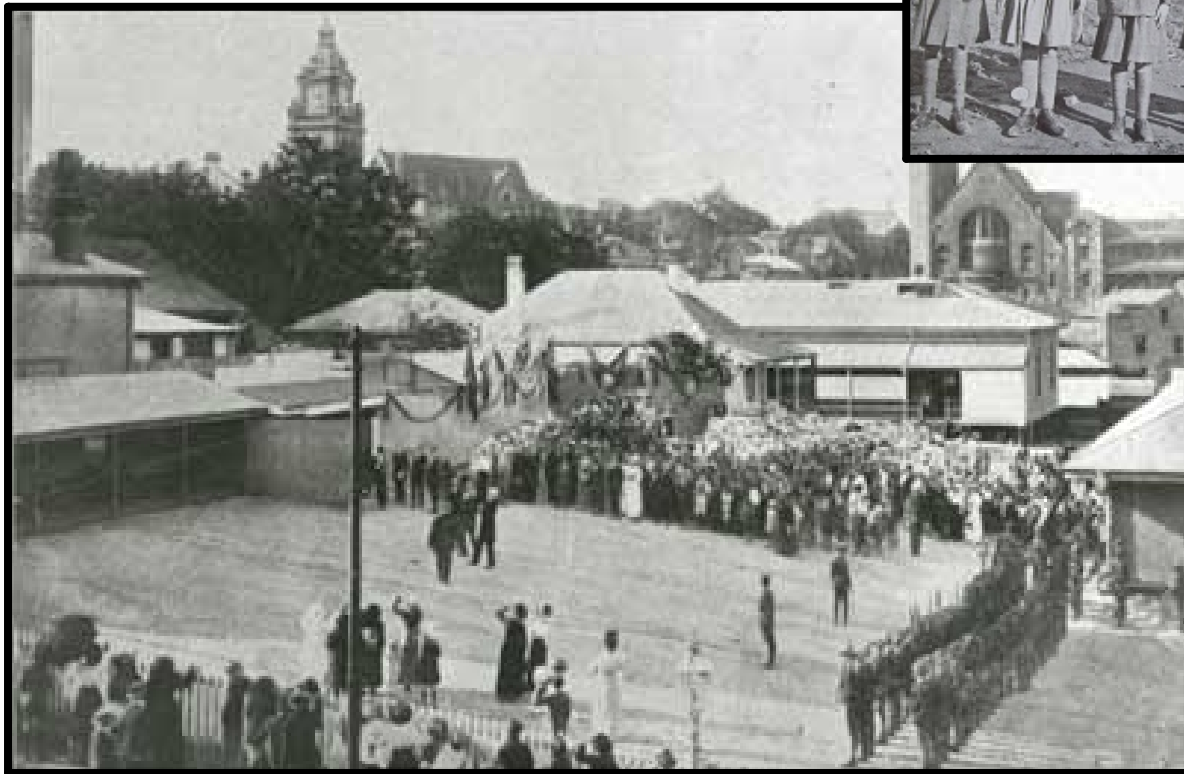
The newsletter of The Royal Historical Society of Queensland

Patron: His Excellency the Honourable Paul de Jersey AC,
Governor of Queensland

President: Dean Prangley

Website: www.queenslandhistory.org.au

EARLY CELEBRATIONS OF ANZAC DAY



Queensland Government Photograph

The larger photograph shows a celebration of the first Anzac Day in 1916 at the old Brisbane Normal School (closed in 1926), which once stood on the corner of Adelaide and Edward Streets in Brisbane. Mr Hardacre, (Queensland Minister for Public Instruction) addressed 1400 Normal School children, teachers and parents, indicating that it was the desire of the Department of Public Instruction to enshrine this day as a very significant event in the history of Australia and ensure that it was fittingly observed annually in schools in both urban and remote areas.

The smaller photograph was found in the Beenleigh and District Historical Society's archives and shows five young girls dressed as WWI soldiers complete with leggings and each with a letter spelling A.N.Z.A.C. There is no provenance for this photograph, but it is certainly from the WWI period and celebrating ANZAC day.

Graeme Nicholson

President's Report

Dear Members,

Hello everyone and welcome to April. Our president Dean Prangley is enjoying a holiday and I am pleased to write this president's report on his behalf.

The year is flying; your Society is busy planning several events for 2016. We have a full program of lunchtime talks planned, held every second Wednesday of the month at the Commissariat Store. The topics cover many aspects of Queensland history; join us for history at 12.30 pm followed by a light lunch.

In June we have two significant events. The first is our Queensland Day Dinner and presentation of the John Douglas Kerr medal of distinction on 6 June. This year the dinner is being held at the Brisbane Club.

On Saturday 18 June the Society will hold its annual seminar. This year's theme centres around the history of sports in Queensland, including lifesaving, rugby league and croquet. We hope you will join us for these two events.

Our last major event for the year will be our Separation Day cocktails, held on 10 December. This event will see the RHSQ launch of *Lost Brisbane 2*. For those of you who own the first book, this second one is the perfect complement - and just in time for Christmas. Our research team is working tirelessly: we look forward to seeing their work come to fruition.

I look forward to welcoming you all to our events in 2016.

Ché Aberdeen
Vice President

Queensland News

(Collected by Ruth Kerr from personal Queensland contacts, Affiliated Societies, Newspapers and Department of Environment and Heritage Protection official notifications)

Atherton - The Atherton Performing Arts Association (APA) has received its Trustee Lease under the *Land Act 1994* over the Silo Road Theatre from Tableland Region Council. It is for 10 years to 25 November 2025. The igloo in Silo Road has been the APA's home for 34 year years. It was a former World War II igloo situated at Bones Knob near Tolga. The building was entered on the Queensland Heritage Register in 2015. (*Tablelander* 16 February 2016 pp.7 and 19 including six photographs)

Clermont - Clermont Historical Centre has obtained a heritage exhibit from Queensland Rail for its outdoor exhibits. A section of heritage listed Arbor Creek Bridge, more than 125 years old and steeped in some of the region's most historic moments, has been installed and donated to the Centre. The bridge played a key role in the town's dramatic past: it was connected with the Shearers' Strikes of the 1890s. Shearers attempted to damage the railway and derail trains transporting outside labourers into the region. On 1 April 1891, the watchman of the Arbor Creek Bridge found one of the bridge piles, some 45 centimetres in diameter, sawn right through, as a form of sabotage. Clermont Heritage Centre is on the Peak Downs Highway and is 2 km west of Clermont. It is open on Wednesday to Saturday 9.00 am to 3.00 pm. (Queensland Railways *Weekly Notice* 22 February 2016; *Central Queensland News* 26 February 2016 p. 4 including photograph)

Mareeba - The Mareeba Centenary Park was established in 1978 by Cardie Peters when 30 senior citizens planted memorial trees. A Mareeba Lions Club committee had proposed the idea in 1969. New plaques were laid on 19 February 2016 by Mareeba families. The Mareeba Shire Council continues to support the Centenary Park. (*Tablelands Advertiser* 26 February 2016 p.9 including photograph)

Millaa Millaa - The Eacham Historical Society at Millaa Millaa needs a skilled person to repair their manual telephone exchange. It was used from 1923 to 12 December 1979 at Millaa Millaa. The museum holds miscellany of artifacts illustrating the area's farming history. It also houses a display of Ernst J Kjelberg's chiropractic career. The museum is open 24/7 9.00 am to noon. (*The Tablelander* 1 March 2016 p.10 including three photographs)

North Pine Rail Bridge - The *Pine Rivers Express* on 25 February 2016 on page 5 reported that the North Pine rail bridge is to be demolished as part of the new Moreton Bay rail link. The first bridge was built in 1888. In 1909-10 the *Annual Report* of the Commissioner for Railways it was stated that the time had come to duplicate the section Northgate Junction to Gympie for rapidly expanding traffic which would be more economical than indefinitely increasing crossing stations. (Only to Caboolture was done.) The *Annual*

Report of the Commissioner for Queensland Railways (1913-14) reported that the ‘bridges on the South Pine River, Tributary Creek, and the North Pine River were being rebuilt, by the Construction Department of the Queensland Railways, on the original alignment of the North Coast Line, for locomotives up to 12 ton axle loads’. The bridges were reported as being of steel and concrete. An article in the *Queensland Times* on 28 June 1915, commented that ‘The duplication of the North Coast Line as far as Petrie will be completed as soon as the bridges over the North and South Pine Rivers...are finished’. So the completed bridge(s) were not brought into use until the latter part of 1915, or early 1916.

Oakey – The Chamber of Commerce has found that the operating costs for managing the old railway station are far too high for a not-for-profit organisation. (*Oakey Champion* 24 February 2016 p. 7)

St George - The Balonne Shire Council is planning an upgrade of its Art Gallery by adding both Indigenous and non-Indigenous art and cultural objects. The Council has received \$1.68 million in grant funding and will contribute a further \$1 million. (*Balonne Beacon* 11 February 2016 p.4)

Tolga – The Historical Society is embarking on a project of collecting the memories of Tablelanders. The society invites Tablelanders to contact the Society’s President, Rob Fuller (0427 869 446), to undertake their oral histories. Mr Joe Tomerini from Rocky Creek suggested the project and hopes that many people across the Tableland will participate in the project. (*Tablelander* 16 February 2016 pp. 1 and 4 including two photographs)

Tully – Ingan Tours have moved into the Tully heritage listed railway station. There is still further maintenance work to be done. The Indigenous group provides cultural tours and experiences in the district. (*Tully Times* 11 February 2016 p.12)

Warra – The town’s rail underpass has now been fully repaired and restored and is open again. The Warra Progress and Heritage Preservation Society lead the consultation with Queensland Rail to achieve the restoration of the subway. (*Dalby Herald* 19 February 2016 p.5 including two photographs)

Burke and Wills Camp - ‘Dig Tree’ Recognition

Our Society’s media release on the National Heritage Register was utilised and highlighted in the *Longreach Leader* of 5 February 2016 on page 7. The Royal Historical Society of Queensland is the trustee of the ‘Dig Tree’ Reserve under the *Land Act 1994*. The newspaper report highlighted our Society’s president, Mr Dean Prangley’s statements in the media release about the Society’s intention under our new Conservation Management Plan to upgrade the management, interpretation and protection of the site to accommodate the growing number of tourists and enhance regular communication with stake holders.

The Media Release Mentioned Above

The Listing of the Dig Tree and other Burke and Wills Sites on the National Heritage Register under the Environment Protection Biodiversity Conservation Act 1999

Royal Historical Society of Queensland

Tuesday 2 February 2016

The Royal Historical Society of Queensland welcomes the Dig Tree’s National Heritage listing

The President of The Royal Historical Society of Queensland (RHSQ), Dean Prangley, has welcomed the Federal Government’s listing of the Burke and Wills 1860-1861 expedition sites onto the National Heritage Register.

The National Heritage listing comprises five important sites along the banks of Cooper Creek, near Innamincka, that represent key locations for the ill-fated expedition into inland Australia.

One of these sites, known as the Dig Tree at Cooper Creek, is where expedition members established a base camp, buried supplies and left markings and messages for each other.

Mr Prangley said the Dig Tree had long been considered a national treasure. ‘The listing of the Dig Tree on the National Heritage Register further highlights the importance of the site as part of Australia’s cultural heritage,’ he said. ‘It has long served as a memorial for the camp site and is an enduring reminder of our pioneering spirit.’

The Dig Tree reserve had previously been known as Depot Camp 65 for the 1860-61 Burke and Wills expedition from Melbourne to the Gulf of Carpentaria, with the expedition contributing to the opening up of the Australian inland to pastoralism. Explorers Robert O'Hara Burke and William John Wills completed the first north-south crossing of the Australian continent, but died during their return journey.

Situated on the southern bank of the Boolloo Boolloo waterhole at Cooper Creek via Thargomindah, the Dig Tree is a mature Coolabah believed to be 200 to 250 years old. A reserve was created in 1964 as a means of protecting the Dig Tree and the RHSQ was appointed Trustee of the site. The Dig Tree reserve was listed on the Queensland Heritage Register in February 2003.

Mr Prangley said this month the RHSQ would review an updated Conservation Management Plan (CMP) prepared for the site, which was made possible with a grant from the Queensland Department of Environment and Heritage Protection.

'The CMP will allow us to examine a number of important issues aimed at working closely with the Bullo Shire Council, the Burke & Wills Historical Society, Santos Limited and other key stakeholders to improve the management, interpretation and protection of the site to accommodate the growing number of tourists,' he said. 'I travelled to the Dig Tree reserve late last year to see first-hand how a range of additional measures could promote and protect the site for future generations.'

Media Contact: Ms Helen Brackin, Manager, RHSQ – Telephone 07 3221 4198'.

Research Report

Inquiries have been varied once again over the last month, though research activity has been quieter than usual. The requests have included information on: women working with stone in the convict colony; Samuel Hoffmeister of Waltzing Matilda legend; Talgai Station; letter book of James Morgan; Ellen Wickham and her grave; Monument of Captain Cook at Seventeen Seventy; shot gun belonging to Thomas Welsby, the Exhibition Grounds and another request for a copy of images of Narcisse Pelletier.

Visitors' research has included the Riverside Coal Transport Company; the suburb of Taringa; a search of the *Jubilee History of Queensland* and on Robert Travers Atkin, and William Lacy, early boatman of Moreton Island.

Val Donovan
Honorary Research Officer

A statement on the National Library's TROVE service March 2016

The Royal Historical Society (RHSQ) is concerned about the proposed change to the operating model for the National Library of Australia's (NLA) popular TROVE service. Since it was introduced in 2009, TROVE has been embraced by collecting institutions and content partners throughout Australia for providing an innovative online platform which enables researchers to easily search, discover and access material held in dispersed collections.

TROVE is particularly valued by Australians living in remote and regional communities, with tens of thousands of people accessing this service each day. However, the NLA has advised that the impact of the Federal Government's efficiency dividend is likely to result in changes to the TROVE service.

Of particular concern is that TROVE may cease aggregating content from museums and universities unless it is fully funded to do so. The cessation of aggregated content from universities and museums, if adopted, may limit the future effectiveness of this important service.

The RHSQ considers it vitally important for TROVE to maintain its place as an invaluable component of Australia's research infrastructure.

Your Speaker for April

Murray Bird will speak on 'The Origins of Queensland football'

Wednesday 13 April 12.30 pm

Murray Bird worked for the Australian Football League in Brisbane for 17 years and in 1990 became the first Queenslander to umpire in the Australian Football League. In 2004 he completed his Masters Dissertation on the origins of Queensland football. Since that time he has worked on and off on *Athenians and Red Invincibles, The Origins of Queensland Football* which was released in 2015.

The code of Australian Rules football has been played in Queensland for 150 years. In 1866, over a

decade before South Australia finally adopted what was then called the Victorian Rules, Queenslanders were playing the Australian game. Prior to the late 1870s Australian Rules football was played in only two colonies, Victoria and Queensland. Australian Rules was “the game of the colony” and Queenslanders were enamoured with the skill and finesse of a sport that was gradually diverging from its rugby roots. A bitter battle of the codes erupted in 1884. This battle was to shape the course of Australian sporting history for the next 130 years.

Notice from the Queensland Women’s Historical Association

‘Baptisms and Bibles’

Saturday 2 April until Sunday 10 April

An exhibition from the QWHA archives of Bibles and Queensland Baptism memorabilia, including christening gowns, baptismal certificates and baptismal font photos from throughout Queensland.

Display is open during normal opening hours until Sunday 10 April, 2016.

House entry fee of \$8.00 applicable for Non-members

Notice from the Queensland State Archives

Family History Discoveries at the Archives (Webinar)

Thursday 21 April

10.00 - 11.00 am

Queensland State Archives holds many records that can support and add colour to your Queensland family history research. This webinar is an introductory guide to uncovering some of these records and will offer hints and research tips.

This session will be broadcast online by Queensland State Archives as a webinar.

You may sign up as an individual to watch at home, or some local libraries and other groups are partnering with the Queensland State Archives to facilitate group viewings.

For more information on how to host one of Queensland State Archives' webinars, please view our online how to guide. We also have an online step-by-step guide to viewing our webinars.

For any other questions about viewing or hosting our webinars, please send an email to info@archives.qld.gov.au before the day of the webinar.

Commemorating ANZAC Day

Many ceremonies, parades and other activities are held on ANZAC Day to remember the lives of those who participated or died in military action, particularly on the Gallipoli Peninsula and in France during World War I. Dawn prayer or church services and a march are particularly important aspects of ANZAC Day. These represent the comradeship that the soldiers experienced and the hope that they would survive as they rose each morning to prepare for another day of military action.

After the services a gunfire breakfast (coffee with rum in it) is often served. In major cities and many smaller towns parades, marches and reunions of current and past military personnel and memorial services are held. The fourth stanza or verse of a well-known poem, known as ‘The Ode’, is read aloud at many ceremonies. The poem is called ‘For The Fallen’ and was written by Laurence Binyon in 1914. It commemorates those who died and can never grow old. Following is the well-known fourth stanza:

‘They shall grow not old, as we that are left grow old:
Age shall not weary them, nor the years condemn.
At the going down of the sun and in the morning,
We will remember them.’

LEST WE FORGET!

Royal Historical Society of
Queensland PO Box 12057 Brisbane,
George Street QLD 4003
RHSQ Bulletin: PP100004098
RHSQ Journal: PP100004097

**PRINT
POST**

**POSTAGE
PAID
AUSTRALIA**



<u>IMPORTANT EVENTS AND FUNCTIONS</u> <u>APRIL 2016</u>	New Members
Wednesday 13 April - Talk 12.30 pm ‘The Origins of Queensland Football’ Murray Bird Thursday 14 April - Council Meeting Friday 15 April - Bulletin deadline Monday 25 April - ANZAC day	Anastasia Dukova Toowong Riverside Marine Newstead Jonathan Sise Dingley Village

Contact details:	Bulletin articles only:	Subscriptions:																
Location: Historical Museum and Welsby Library at the Commissariat Store, 115 William Street, Brisbane Manager: Helen Brackin Phone: 07 3221 4198 Fax: 07 3221 4698 E-mail: info@queenslandhistory.org.au Website: www.queenslandhistory.org.au ABN: 34 217 251 028 Postal: The Royal Historical Society of Queensland, PO Box 12057, Brisbane George Street, 4003	Editor A/Editor: Dr Graeme Nicholson Marjorie Shackleton E-mail: info@queenslandhistory.org.au Phone: 07 3221 4198 Fax: 07 3221 4698. Postal: RHSQ, PO Box 12057, Brisbane George Street, 4003	<table border="1"> <tbody> <tr> <td>Ordinary Member</td> <td>\$66.00</td> </tr> <tr> <td>Partner of Member</td> <td>\$22.00</td> </tr> <tr> <td>Junior Member (U18)</td> <td>\$11.00</td> </tr> <tr> <td>Full-time Student (U25)</td> <td>\$33.00</td> </tr> <tr> <td>Affiliated Society</td> <td>\$55.00</td> </tr> <tr> <td>Subscription fee for libraries</td> <td>\$66.00</td> </tr> <tr> <td>Corporate/Institutions</td> <td>\$275.00</td> </tr> <tr> <td>Life membership – purchased after 10 years</td> <td>\$5,500.00</td> </tr> </tbody> </table>	Ordinary Member	\$66.00	Partner of Member	\$22.00	Junior Member (U18)	\$11.00	Full-time Student (U25)	\$33.00	Affiliated Society	\$55.00	Subscription fee for libraries	\$66.00	Corporate/Institutions	\$275.00	Life membership – purchased after 10 years	\$5,500.00
Ordinary Member	\$66.00																	
Partner of Member	\$22.00																	
Junior Member (U18)	\$11.00																	
Full-time Student (U25)	\$33.00																	
Affiliated Society	\$55.00																	
Subscription fee for libraries	\$66.00																	
Corporate/Institutions	\$275.00																	
Life membership – purchased after 10 years	\$5,500.00																	
Open: Tuesday to Friday 10.00 am - 4.00 pm, Closed Saturday, Sunday, Monday as well as Christmas Day, Boxing Day and Easter	The Society acknowledges financial assistance from: The Department of Multicultural Affairs; The National Library of Australia Community Heritage Grant; Queensland Government Gambling Community Benefit Fund; Lord Mayor Graham Quirk, The Lord Mayor’s Suburban Initiative Fund, Brisbane City Council; Jupiters Casino Community Benefit Fund; Queensland State Archives; Blocksidge and Ferguson Real Estate; Our Honorary Auditor, Grant Thornton Audit Pty Ltd.																	